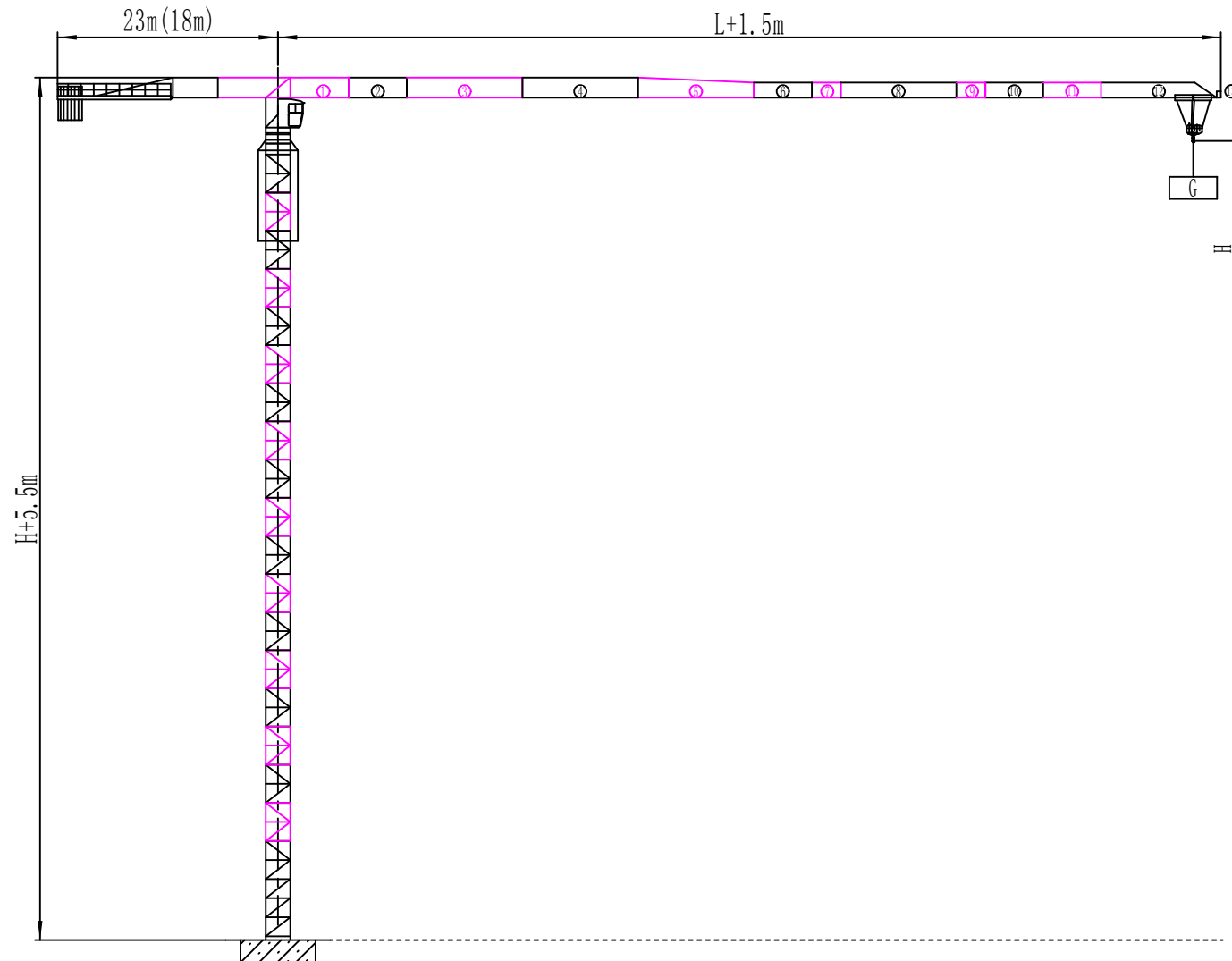
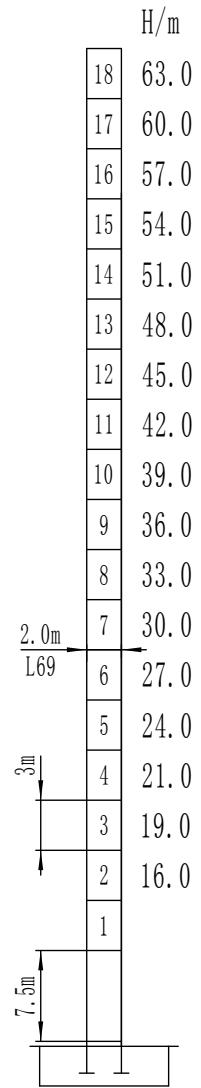


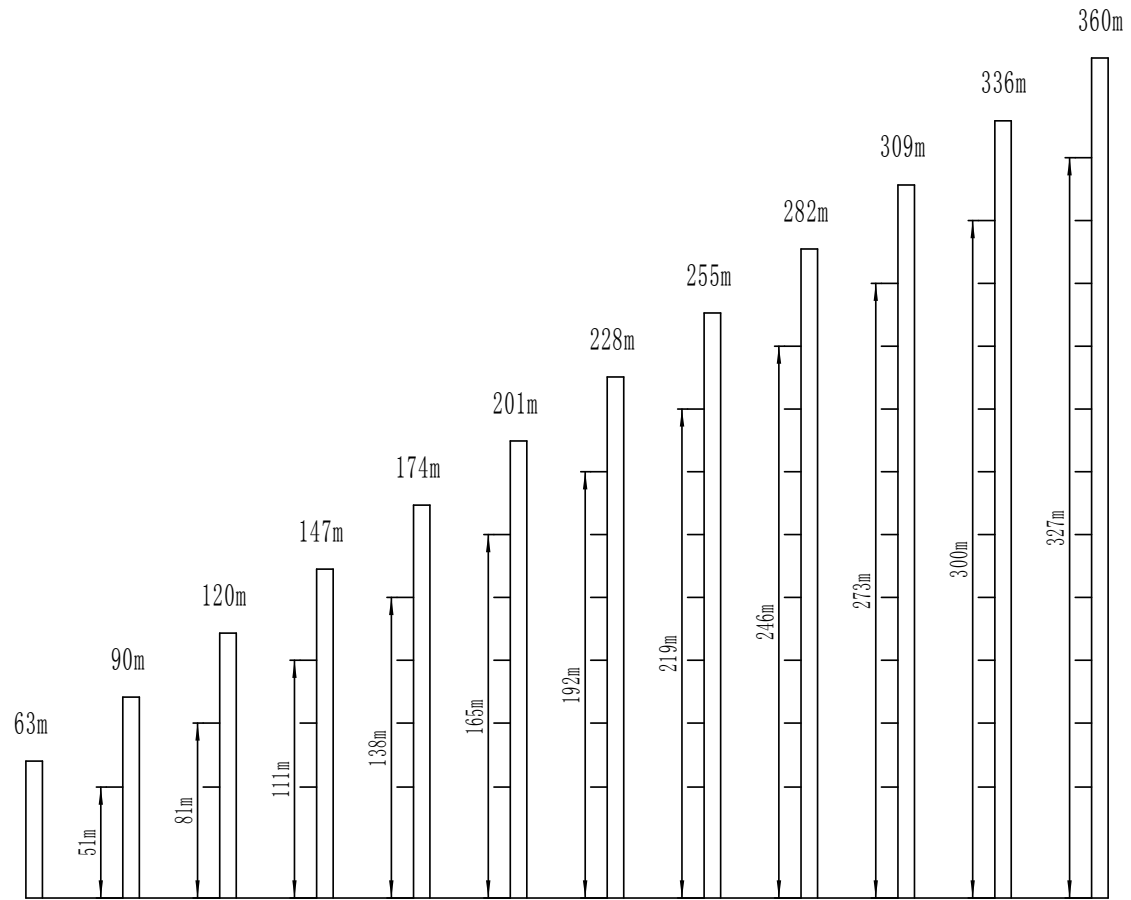
Parameters:

Dimension





支腿固定式





# Max. Lifting Capacity: 20 t

Jib	Fall	最大起重幅度	15	17.5	20	22.5	25	27.5	30	32.5	35	37.5	40	42.5	45	47.5	50	52.5	55	57.5	60	62.5	65	67.5	70	72.5	75	77.5	80
80 (81.5)	a=2	3.5-28.3/10t	10.00						9.37	8.55	7.84	7.23	6.70	6.23	5.81	5.44	5.10	4.80	4.52	4.27	4.03	3.82	3.62	3.44	3.27	3.11	2.97	2.83	2.70
	a=4	3.5-14.5/20t	19.23	16.19	13.90	12.12	10.70	9.54	8.57	7.75	7.04	6.43	5.90	5.43	5.01	4.64	4.30	4.00	3.72	3.47	3.23	3.02	2.82	2.64	2.47	2.31	2.17	2.03	1.90
77.5 (79)	a=2	3.5-29.5/10t	10.00						9.81	8.95	8.22	7.59	7.03	6.54	6.11	5.72	5.37	5.05	4.76	4.50	4.25	4.03	3.83	3.64	3.46	3.30	3.14	3.00	
	a=4	3.5-15.1/20t	20.00	16.94	14.56	12.71	11.23	10.02	9.01	8.15	7.42	6.79	6.23	5.74	5.31	4.92	4.57	4.25	3.96	3.70	3.45	3.23	3.03	2.84	2.66	2.50	2.34	2.20	
75 (76.5)	a=2	3.5-31.9/10t	10.00						9.78	8.99	8.30	7.70	7.17	6.70	6.28	5.90	5.56	5.25	4.96	4.70	4.46	4.24	4.03	3.84	3.67	3.50			
	a=4	3.5-16.3/20t	20.00	18.47	15.90	13.90	12.30	10.99	9.90	8.98	8.19	7.50	6.90	6.37	5.90	5.48	5.10	4.76	4.45	4.16	3.90	3.66	3.44	3.23	3.04	2.87	2.70		
72.5 (74)	a=2	3.5-32.1/10t	10.00						9.85	9.06	8.37	7.76	7.23	6.76	6.33	5.95	5.60	5.29	5.00	4.74	4.50	4.28	4.07	3.88	3.70				
	a=4	3.5-16.4/20t	20.00	18.61	16.03	14.01	12.40	11.08	9.98	9.05	8.26	7.57	6.96	6.43	5.96	5.53	5.15	4.80	4.49	4.20	3.94	3.70	3.48	3.27	3.08	2.90			
70 (71.5)	a=2	3.5-32.2/10t	10.00						9.90	9.10	8.41	7.80	7.26	6.79	6.36	5.98	5.63	5.32	5.03	4.77	4.52	4.30	4.09	3.90					
	a=4	3.5-16.5/20t	20.00	18.70	16.10	14.08	12.46	11.14	10.03	9.10	8.30	7.61	7.00	6.46	5.99	5.56	5.18	4.83	4.52	4.23	3.97	3.72	3.50	3.29	3.10				
67.5 (69)	a=2	3.5-32.9/10t	10.00						9.31	8.60	7.98	7.44	6.95	6.52	6.13	5.77	5.45	5.16	4.89	4.64	4.41	4.20							
	a=4	3.5-16.8/20t	20.00	19.11	16.46	14.40	12.75	11.40	10.28	9.32	8.51	7.80	7.18	6.64	6.15	5.72	5.33	4.97	4.65	4.36	4.09	3.84	3.61	3.40					
65 (66.5)	a=2	3.5-33.4/10t	10.00						9.47	8.75	8.13	7.57	7.08	6.64	6.24	5.88	5.55	5.26	4.98	4.73	4.50								
	a=4	3.5-17.1/20t	20.00	19.44	16.75	14.66	12.98	11.61	10.47	9.50	8.67	7.95	7.33	6.77	6.28	5.84	5.44	5.08	4.75	4.46	4.18	3.93	3.70						
62.5 (64)	a=2	3.5-34.3/10t	10.00						9.77	9.03	8.39	7.82	7.31	6.86	6.45	6.08	5.75	5.44	5.16	4.90									
	a=4	3.5-17.5/20t	20.00	17.28	15.12	13.40	11.99	10.82	9.82	8.97	8.23	7.59	7.02	6.51	6.06	5.65	5.28	4.95	4.64	4.36	4.10								
60 (61.5)	a=2	3.5-35.0/10t	10.00						9.26	8.60	8.02	7.50	7.04	6.62	6.24	5.90	5.59	5.30											
	a=4	3.5-17.9/20t	20.00	17.70	15.50	13.74	12.30	11.10	10.08	9.21	8.46	7.80	7.22	6.70	6.24	5.82	5.44	5.10	4.79	4.50									
57.5 (59)	a=2	3.5-36.1/10t	10.00						9.59	8.91	8.31	7.77	7.29	6.87	6.48	6.12	5.80												
	a=4	3.5-18.5/20t	20.00	18.31	16.04	14.23	12.75	11.51	10.46	9.56	8.79	8.11	7.51	6.97	6.49	6.07	5.68	5.32	5.00										
55 (56.5)	a=2	3.5-36.5/10t	10.00						9.70	9.01	8.41	7.87	7.38	6.95	6.56	6.20													
	a=4	3.5-18.7/20t	20.00	18.53	16.23	14.40	12.90	11.65	10.59	9.69	8.90	8.21	7.61	7.07	6.58	6.15	5.76	5.40											
52.5 (54)	a=2	3.5-37.2/10t	10.00						9.90	9.20	8.58	8.03	7.54	7.10	6.70														
	a=4	3.5-19.0/20t	20.00	18.90	16.57	14.70	13.17	11.90	10.82	9.90	9.10	8.40	7.78	7.23	6.74	6.30	5.90												
50 (51.5)	a=2	3.5-37.6/10t	10.00						9.33	8.70	8.14	7.65	7.20																
	a=4	3.5-19.2/20t	20.00	19.15	16.79	14.90	13.35	12.07	10.98	10.04	9.23	8.53	7.90	7.34	6.85	6.40													
47.5 (49)	a=2	3.5-37.8/10t	10.00						9.39	8.76	8.20	7.70																	
	a=4	3.5-19.3/20t	20.00	19.28	16.90	15.00	13.45	12.15	11.05	10.11	9.30	8.59	7.96	7.40	6.90														
45 (46.5)	a=2	3.5-38.2/10t	10.00						9.50	8.86	8.30																		
	a=4	3.5-19.6/20t	20.00	19.50	17.10	15.18	13.61	12.30	11.19	10.24	9.42	8.70	8.06	7.50															
42.5 (44)	a=2	3.5-38.4/10t	10.00						9.54	8.90																			
	a=4	3.5-19.6/20t	20.00	19.58	17.17	15.24	13.66	12.35	11.24	10.29	9.46	8.74	8.10																
40 (41.5)	a=2	3.5-38.6/10t	10.00						9.60																				
	a=4	3.5-19.7/20t	20.00	19.70	17.28	15.34	13.75	12.43	11.32	10.36	9.53	8.80																	
37.5 (39)	a=2	3.5-38.6/10t	10.00						9.53																				
	a=4	3.5-19.7/20t	20.00	19.70	17.28	15.34	13.75	12.43	11.32	10.36	9.53																		
35 (36.5)	a=2	3.5-38.6/10t	10.00						9.36																				
	a=4	3.5-19.7/20t	20.00	19.70	17.28	15.34	13.75	12.43	11.32	10.36																			
32.5 (34)	a=2	3.5-38.6/10t	10.00						9.11																				
	a=4	3.5-19.7/20t	20.00	19.70	17.28	15.34	13.75	12.43	11.32																				
30 (31.5)	a=2	3.5-38.6/10t	10.00						8.86																				
	a=4	3.5-19.7/20t	20.00	19.70	17.28	15.34	13.75	12.43																					